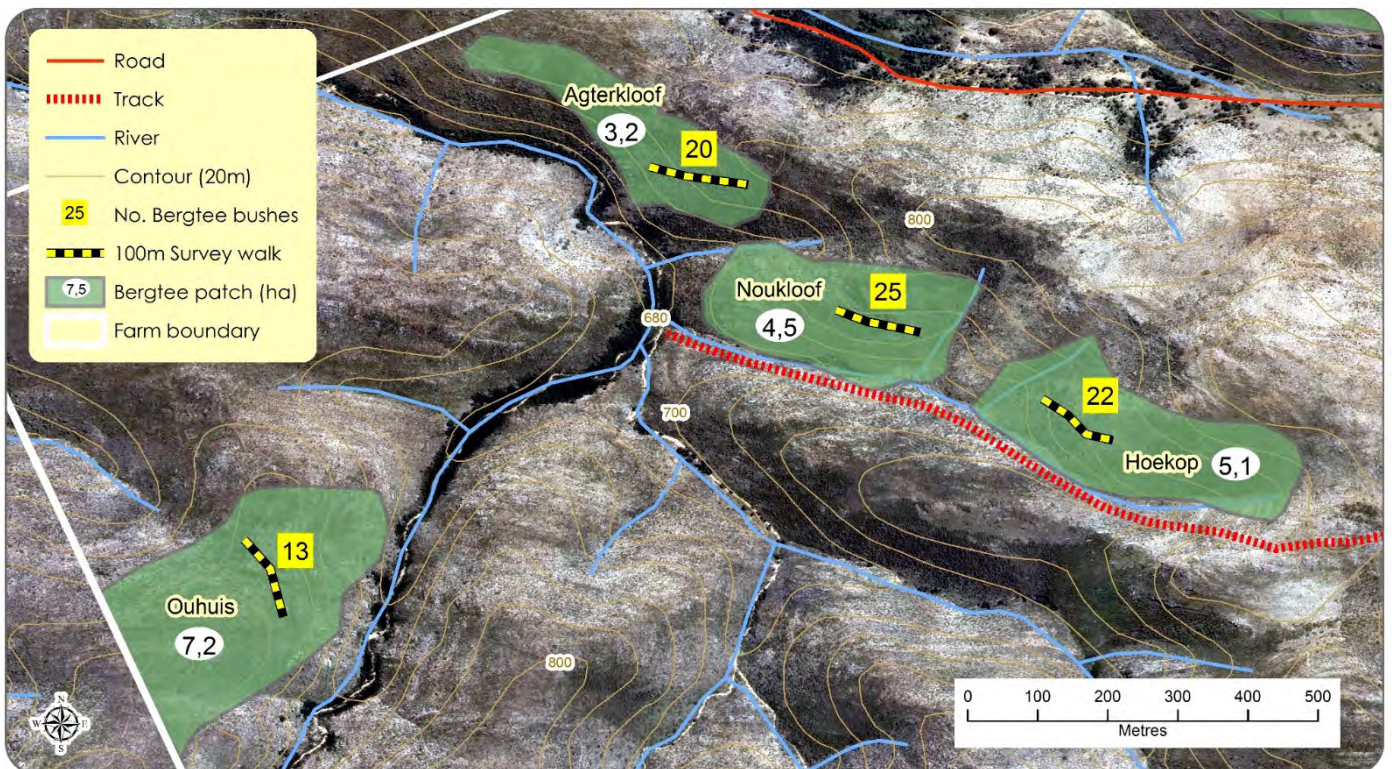


Example

Farm honeybush map - calculating potential yield of Bergtee

Using Google Earth, a farmer has mapped four Bergtee patches on his farm and calculated the area per patch, to give a total of 20ha of Bergtee veld. He has done a survey walk of about 100m (by 2m) in each patch, to get a density figure for approximately 200m² which converts to an average of 1000 plants per hectare. He has harvested a sample of 30 plants and weighed each plant to get an average weight per plant of 0.45kg



Calculating the potential harvest yield

Total area: 20ha	$20\text{ha} \times 1000 \text{ plants} \times 0.45\text{kg}$
Ave. plant density: 1000/ha	$= \mathbf{9000 \text{ kg}}$
Ave weight of plant: 0,45kg	
<hr/>	
2 year harvest interval, 50% of plants cut: 4500 kg	
<hr/>	
4 year harvest interval, 80% of plants cut: 7200 kg	